



SHOCKER CROWS FOOT WRENCH FOR BOLT STYLE COMBO BALL

-INSTALLATION

- For easy use, put bolt style combo ball into vise and tighten to prevent slipping (see Figure 1).
- Intall crows foot wrench on torque wrench that is capable of 400 lbs. ft. (see Figure 2).
- Put crows foot wrench onto the 2" ball side and lock into place with bolt pattern (see Figure 3).
- Check that the torque is meeting the requirement of 400 lbs. ft. If not hitting 400 lbs. ft., continue to tighten until reached.
- If very loose, take apart and clean threads. Use Loctite 272 and bolt back together to 400 lbs. ft. Let cure for 24 hours (see Figure 4, 5, and 6).
- Check your ball regularly to ensure it's not loose. Retorque every 6 months at 400 lbs. ft.



Figure 1: Insert combo ball into vise



Figure 2: Attach crows foot wrench onto torque wrench



Figure 3: Attach wrench onto 2" side of combo ball and torque to 400 lbs. ft. (repeat if necessary).

-ADDING LOCTITE TO THREADS

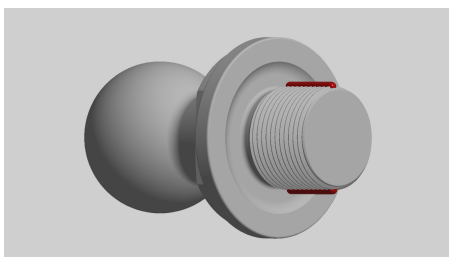


Figure 4: Add two lines of Loctite 272 to the male end

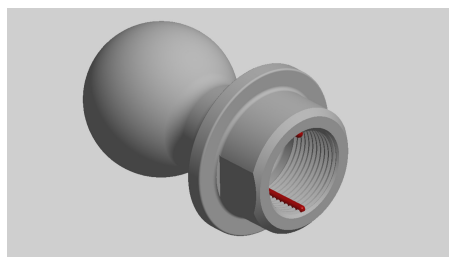


Figure 5: Add two lines of Loctite 272 to the female end

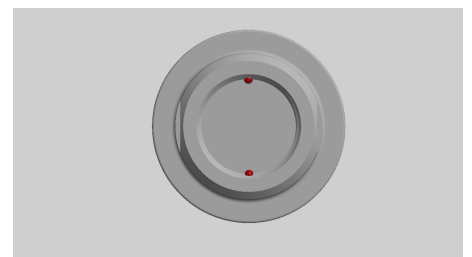


Figure 6: Female end inside