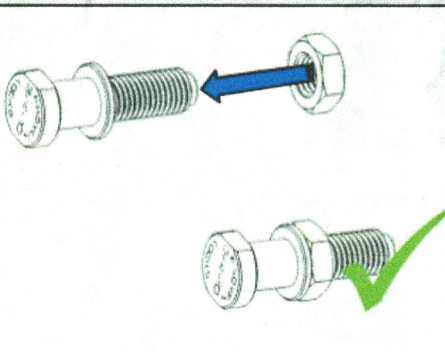


Gooseneck Jam Bolt Model 400GL



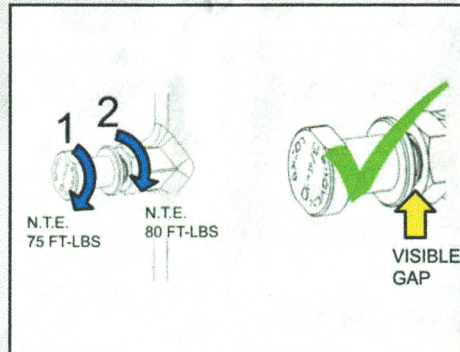
Step 1

Install the jam nut on the locking bolt all the way to the shoulder.



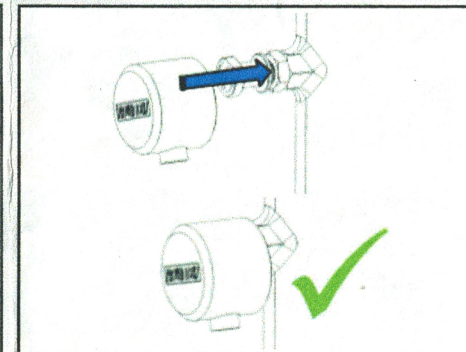
Step 2

Screw the bolt into the threaded boss on the gooseneck tube until firmly in place (not to exceed 75 ft-lbs). Secure the jam nut onto the gooseneck tube until firmly in place to lock the bolt in position (not to exceed 80 ft-lbs). There should be a visible gap between the top of the nut and the shoulder of the bolt.



Step 3

Using the key, move the lock cylinder to the unlocked and extended position then slide the puck lock over the exposed head of the bolt as far as possible.



Step 4

Insert the key into the lock cylinder, rotate the key counterclockwise, and depress the locking cylinder fully into the puck lock. Verify the puck lock is secure by rocking it back and forth and spinning it around the bolt.

